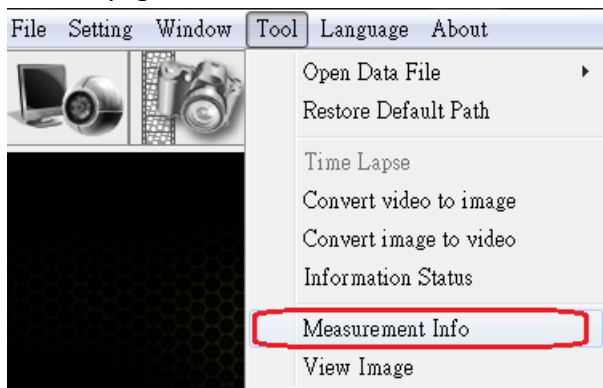


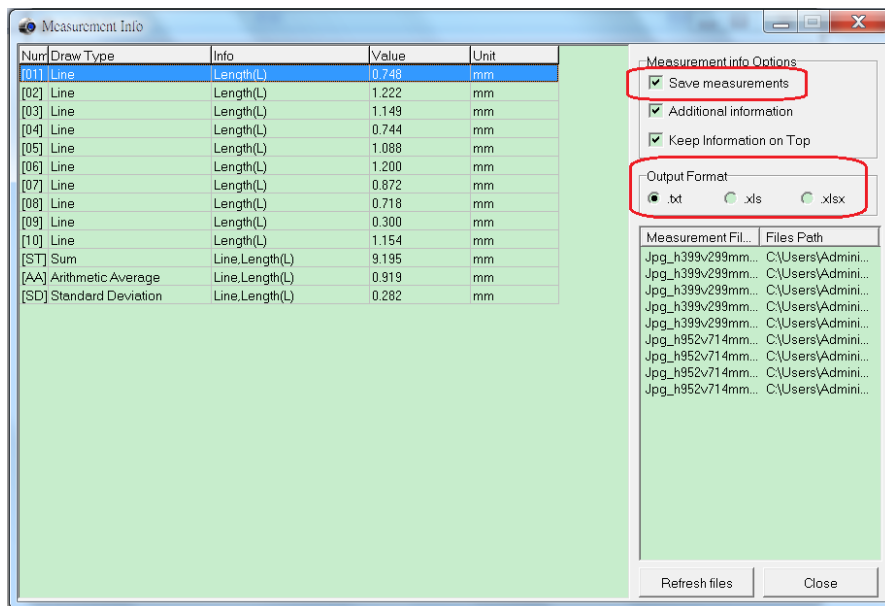
Excel Export Function

Q: How do I export the Excel or txt file from software?

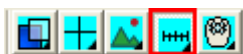
A: Firstly, go to Tools, Choose "Measurement info", click "Save measurement".



Then there is a "Output Format", please choose xls, xlsx or txt file.



Secondly, Go to Measurement function

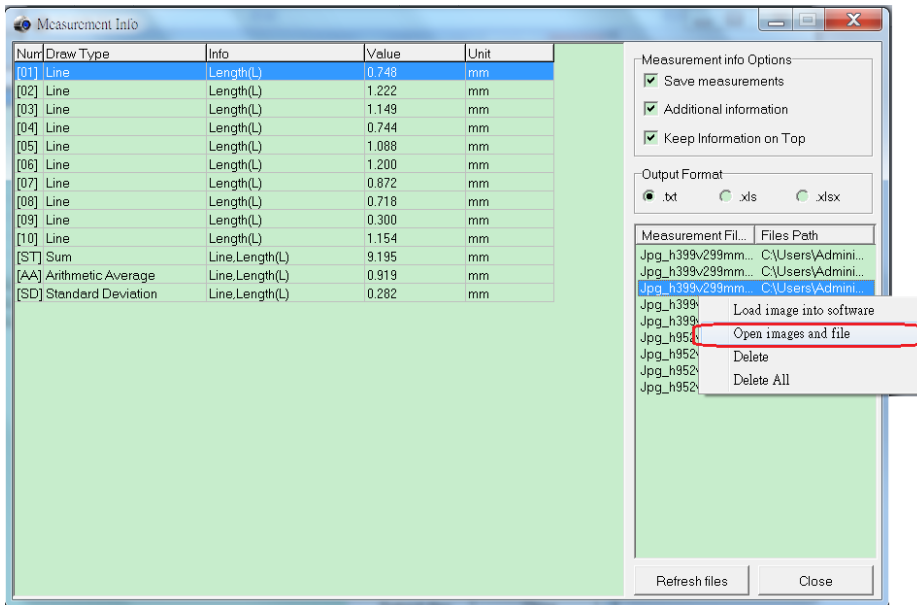


Thirdly, draw any line styles and you will see the number show on image. (such as :No 1 C:0.2mm, No 2 C: 0.25mm)

Forth, Save file by click the "Save" in the below toolbar. Only this Save can save the image and draw figures.



After files saved, go back to the "Measurement Info" then right click on the file name, choose open images and file. You can see one image and another excel file listed your measurement details.



Note: 1) must set Measurement info first and choose the file user want to save, such as txt file or excel file.

Note: 2) when click on different output format, it will show the files which saved under this mode. If you have 10 files, but only 3 in txt file, then you can only see 3 files under txt list.